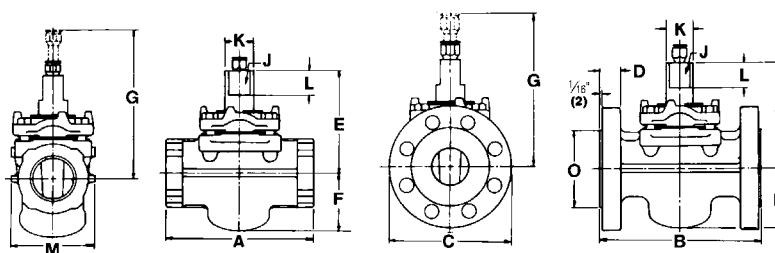


Regular Pattern

500 CWP (34.5 bar)
1000 psig (69.0 bar) Test

Figure 524 Threaded, Wrench
Operated, Sizes ½ to 4

Figure 525 Flanged, Wrench
Operated, Sizes 1 to 4



Size	NPS	½	¾	1	1¼	1½	2	2½	3	4
	DN	15	20	25	32	40	50	65	80	100
End-to-end, threaded, Figure 524	A	3.75 95	3.75 95	4.88 124	5.38 137	6.75 171	8.00 203	9.50 241	9.38 238	10.50 267
Face-to-face, flanged (includes 1/16" raised face), Figure 525	B			6.25 159		7.50 191	8.50 216	9.50 241	11.13 282	12.00 305
Diameter of flange	C			4.9 124		6.1 155	6.5 165	7.5 191	8.3 211	10.0 254
Thickness of flange (include 1/16" raised face)	D			.75 19		.94 24	1.06 27	1.19 30	1.31 33	1.50 38
Center to top of stem	E	3.9 99	3.9 99	4.1 104	4.6 117	4.9 124	5.7 145	6.2 157	7.0 178	7.5 191
Center to bottom of body	F	2.0 51	2.0 51	2.2 56	2.5 64	2.8 71	3.2 81	3.7 94	4.3 109	4.7 119
Clearance required to remove sealant fitting	G	6.5 165	6.5 165	6.7 170	7.2 183	7.5 191	8.3 211	8.8 224	9.6 244	10.1 257
Width of stem flats	J	.81 21	.81 21	.88 22	.94 24	1.00 25	1.13 29	1.25 32	1.38 35	1.38 35
Diameter of stem	K	1.09 28	1.09 28	1.22 31	1.31 33	1.41 36	1.59 40	1.78 45	1.97 50	1.97 50
Height of stem flats	L	.9 23	.9 23	1.0 25	1.1 28	1.2 30	1.4 36	1.5 38	1.8 46	1.8 46
Extreme width of body, Figure 524	M	3.1 79	3.1 79	3.3 84	3.6 91	3.9 99	4.6 117	5.4 137	6.0 152	6.8 173
Diameter of 1/16" raised face	O			2.6 66		3.5 89	4.1 104	4.9 124	5.6 142	6.9 175
Size of wrench	—	D-8	D-8	E-8	H-8	J-8	K-8	L-8	M-8	M-8
Length of wrench	—	5.5 140	5.5 140	7.0 178	9.0 229	10.5 267	14.0 356	17.5 445	21.0 533	21.0 533
Size of Sealant Stick	—	B	B	B	B	B	B	B	B	B
Weight (approx.), Figure 524	—	6 3	6 3	9 4	13 6	18 8	27 12	43 20	58 26	80 36
Weight (approx.), Figure 525	—			14 6		28 13	38 17	56 25	81 37	110 50

Flanges are drilled to ASME Class 250 Cast Iron Flange Standard Template. For drilling and bolting data, see page 45.

Figures 524 and 525 valves conform to the following standards where applicable: ASME B1.20.1; ASME B16.1; ASME B16.10; API 5B; ASTM A126,

Class B; and MSS SP-78. See page 38.

Figure 525 face-to-face lengths are interchangeable with ASME Class 250 and API 500 CWP Cast Iron Gate Valves.